



**Vision Fountain  
Biotechnology**

**PRECISION INSIGHT,  
INFINITE ENDOSCOPY.**

**Innovative Provider of Comprehensive  
Endoscopic Solutions**

**PRECISION INSIGHT, INFINITE ENDOSCOPY.**



**Vision Fountain  
Biotechnology**

**Hangzhou Vision Fountain Biotechnology Co., Ltd.**

+86 180 0671 6251

info@vfbio.cn

www.vfbio.cn

Room A204, 1st Building, No.28, No.4 Avenue, Baiyang  
Street, Qiantang District, Hangzhou City, CN. 310018

# ABOUT US

## Company Profile



Vision Fountain, a leading medical endoscope manufacturer and provider, specializes in the research, development, and production of high-quality medical endoscopes. VF BIO established in 2022, we committed to providing innovative solutions for medical industry, with focus on cutting-edge technology and superior craftsmanship, our products have gained widespread recognition and trust from medical professionals worldwide.

The company operates in strict accordance with the ISO13485 system, in addition with ROHS 2.0, HSF and other related systems, the production operates according to the MES system to achieve completed traceability. VF BIO have a 4500 m<sup>2</sup> manufacturing factory and 750 m<sup>2</sup> R&D center, including a 1400 m<sup>2</sup> 100,000 level medical cleaning workshop and a 400 m<sup>2</sup> 10,000 level medical cleaning workshop.

**2022** years  
Establishment

**750** m<sup>2</sup>  
R&D center

**ISO13485** system  
Operation system

Manufacturing Factory

# 4500m<sup>2</sup>



## Company Value



- ▶ Continuous innovation
- ▶ Win-win cooperation
- ▶ Quality on the top
- ▶ Reverence for life

## Company Spirit



To become an international, large-scale, intelligent and diversified medical endoscope manufacturing enterprise.

## Vision & Mission

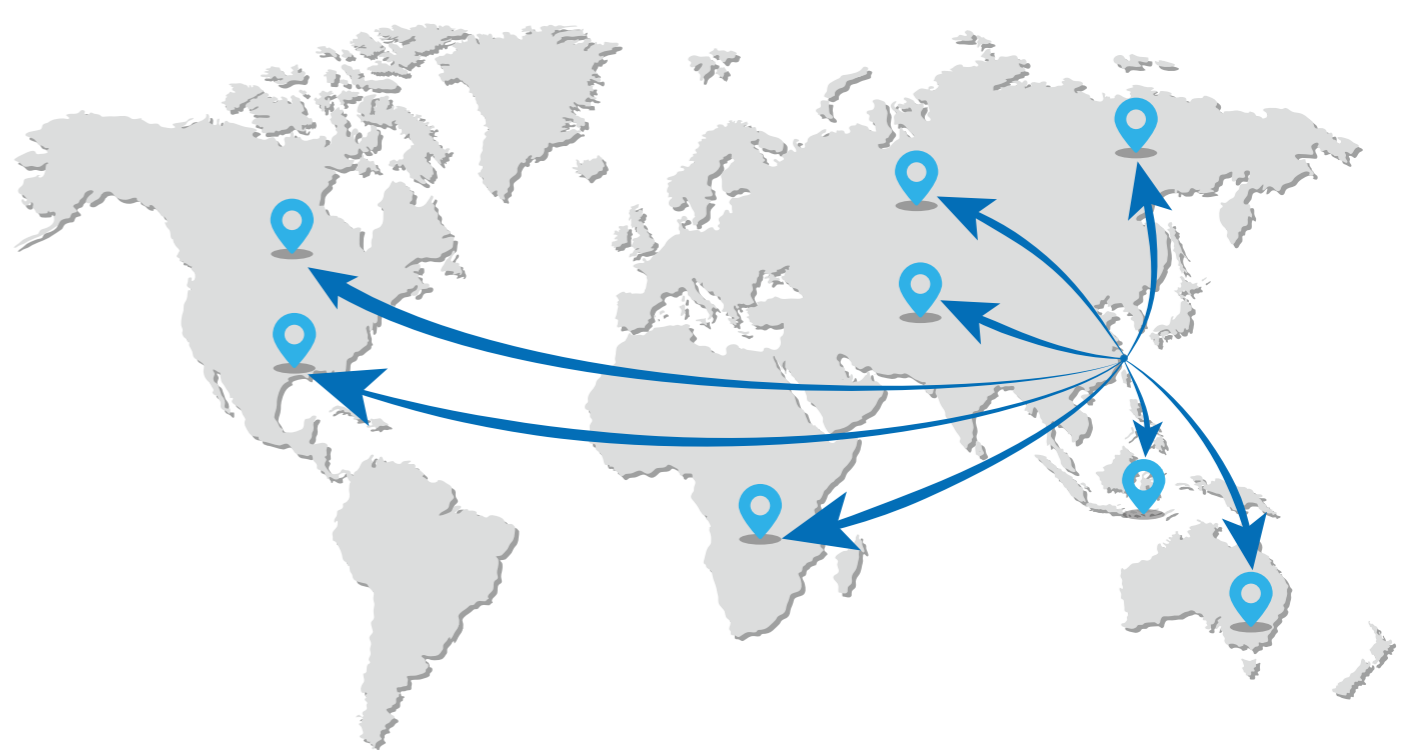


To become the world's leading provider of comprehensive medical endoscopic solutions. To contribute all efforts to endoscopic diagnosis and human health.

To provide high-quality, low-cost medical products. People-oriented; give back to society.

# Precision Insight, Infinite Endoscopy.

## GLOBAL MARKETING



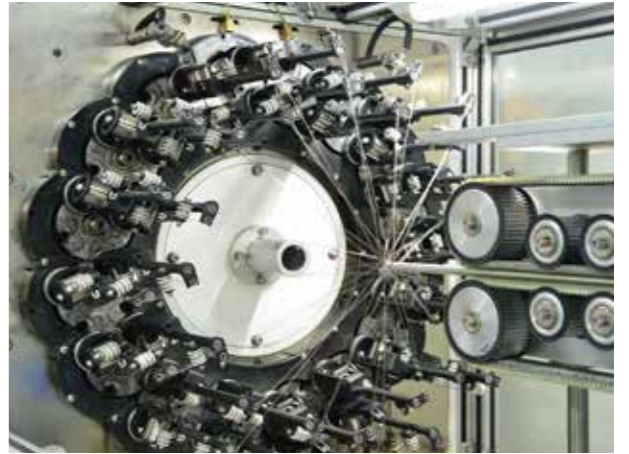
# QUALIFICATION CERTIFICATE





# FACTORY LINE

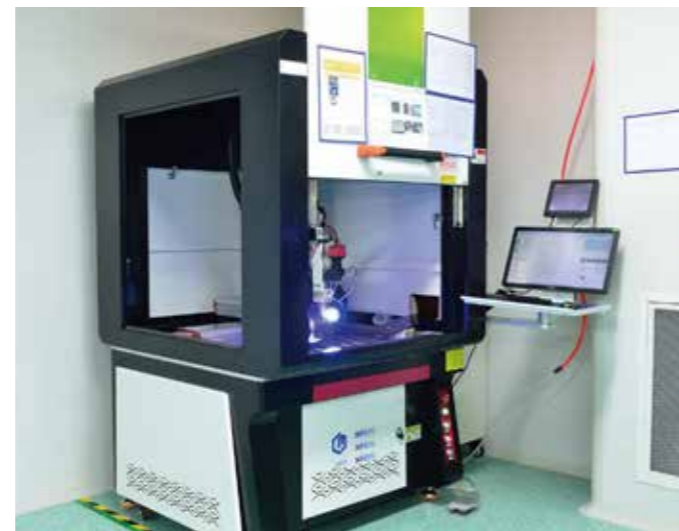
MES is based on a comprehensive management and control system for supervising the whole process of production from raw material storage to product warehousing. Ensuring the stability and reliability of product quality for realizing integration between production and quality control through real-time data analysing, early warning of product quality, traceability system and standardized operation guidance.





# FACTORY LINE

The production of precision tubing and assembling endoscopes, JoyCoal integrates high-precision processing and assembly equipments for assisting to advanced inspection instruments for rigorous performance testing and quality control, ensure that the clarity, durability, and safety of the endoscope realizes national or international medical standards.



## PRODUCT INTRODUCTION

### Standard Disposable Choledochoscope



Model Specification	4.8(±0.02) mm
Configuration Type	XH-CHFA23
Material of Insertion Section	PEBAX
Working Length	385(±5) mm
Operation Handle	Suction(Air/Water) Valve, Camera
Length of Connector Section Cable	2500(±100) mm

Front Tip	4.8 mm
Endoscope Module	400X400 Pixel
Lighting	LED
Instrument Channel (Inner Diameter)	2.3±0.03 mm
Bending Angle	(Up&Down) 210°
Bending Radius	R10(±1) mm
Maximum Outer Diameter for Insertion Section	5.0 mm

Matched Processor	Configuration Types
	XH-PVM-01 / XH-DVP-01

### Standard Disposable Cystoscope

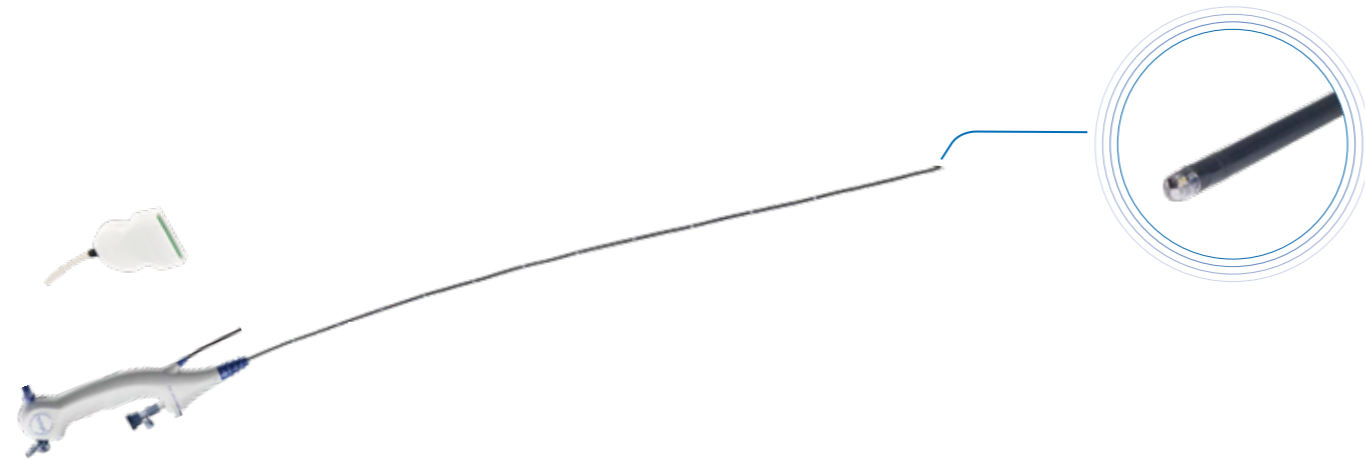


Model Specification	4.8(±0.02) mm
Configuration Type	XH-CYFA22
Material of Insertion Section	PEBAX
Working Length	385(±5) mm
Operation Handle	Suction(Air/Water) Valve, Camera
Length of Connector Section Cable	2500(±100) mm

Front Tip	4.8 mm
Endoscope Module	400X400 Pixel
Lighting	LED
Instrument Channel (Inner Diameter)	2.2*2.45(±0.03) mm
Bending Angle	(Up&Down) 210°
Bending Radius	R10(±1) mm
Maximum Outer Diameter for Insertion Section	5.0 mm

Matched Processor	Configuration Types
	XH-PVM-01 / XH-DVP-01

## Standard Disposable Ureteroscope

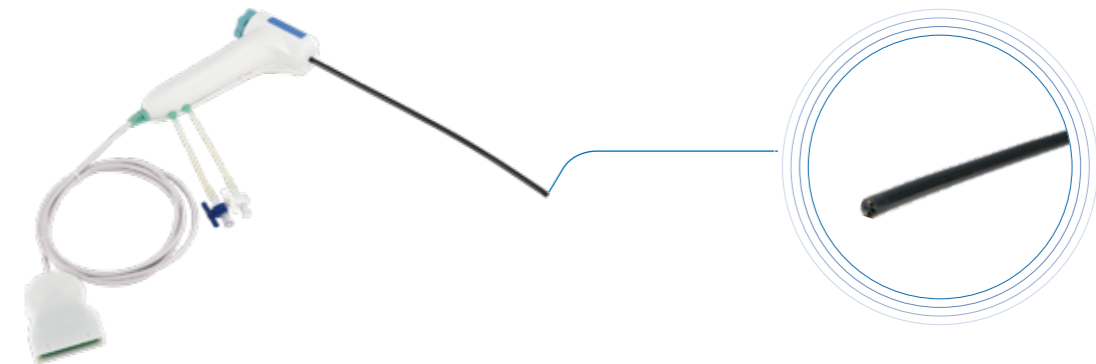


Model Specifications	7.5 Fr	8.4 Fr
Configuration Type	XH-URFA12	XH-URFB12
Materials of Insertion Section	PA12+PA12, with scale value marked	PA12+PA12, with scale value marked
Working Length	630±30 mm	700±70 mm
Operation Handle	Standard Handle(Camera,Freeze)	Standard Handle(Camera,Freeze)
Length of Connector Section Cable	2500±50 mm	2500±50 mm

Front Tip	7.5 Fr	8.4 Fr
Endoscope Module	400X400 Pixel	400X400 Pixel
Lighting	LED	LED
Intrument Channel(Inner Diameter)	1.2(±0.05) mm PTFE Tube	1.2(±0.05) mm PTFE Tube
Bending Angle	(Up&Down)275°	(Up&Down)275°

Matched Processor	Configuration Types
	XH-PVM-01 / XH-DVP-01

## Standard Disposable Hysteroscope

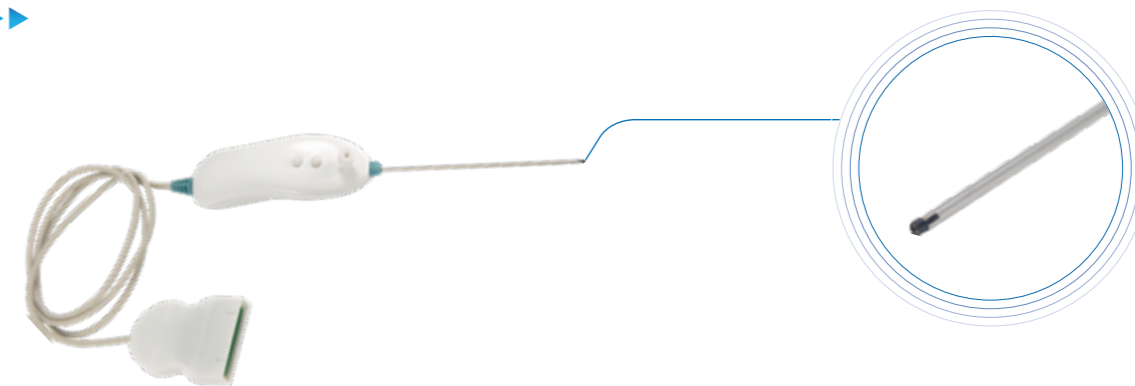


Model Specification	4.3 mm
Configuration Type	XH-HYRA20
Material of Insertion Section	Steel Tube
Length of Connector Section Cable	2500±100 mm

Front Tip	4.3 mm
Endoscope Module	400X400 Pixel
Lighting	LED
Intrument Channel (Inner Diameter)	2.0 mm

Matched Processor	Configuration Types
	XH-PVM-01 / XH-DVP-01

## Standard Disposable Arthroscope

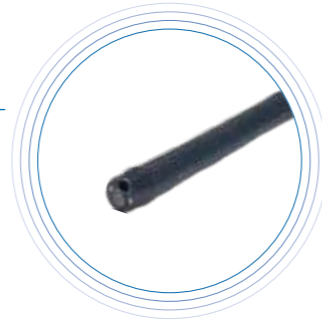


Model Specification	2.0 mm
Configuration Type	XH-ARRA06
Material of Insertion Section	Steel Tube
Length of Connector Section Cable	1600±50 mm

Endoscope Module	400X400 Pixel
Lighting	LED
Intrument Channel (Inner Diameter)	Fr 0.9mm(Water Supply)

Matched Processor	Configuration Types
	XH-PVM-01 / XH-DVP-01

## Standard Reusable Bronchoscope

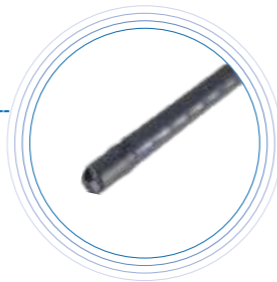


Model Specification	6.0 mm
Configuration Type	XH-REBFA20/B20(Fibre-optical)
Times of repeatable washing and disinfection for endoscope	≥200
Working Length	600(±5) mm
Length of Light Guide Tube and Connector Section Cable	1500±15 mm
Connection Interface	Golden Finger Connector (Conventional, Waterproof)

Front Tip	6.0 mm
Endoscope Module	1000X1000 Pixel
Lighting	LED/Fibre-optical
Intrument Channel	2.0 mm
Bending Angle	Up 180°/Down 130°
Bending Radius	R11 mm
Maximum Outer Diameter for Insertion Section	6.7(+0.05) mm

Matched Processor	Configuration Types
XH-REBFA20	XH-PVM-01/XH-DVP-01
XH-REBFB20	XH-LS-01

## Reusable Cystoscope&Choledochoscope



Model Specification	5.2 mm
Configuration Type	XH-RECYA20/RECHA20
Times of repeatable washing and disinfection for endoscope	≥200
Insertion Section	5.2*4.2 mm
Working Length	380(±5) mm
Length of Connector Section Cable	1500±15 mm

Front Tip	5.2 mm
Endoscope Module	800X800 Pixel
Lighting	LED
Intrument Channel	2.0 mm
Bending Angle	Up 180°/Down 130°
Bending Radius	R11
Maximum Outer Diameter for Insertion Section	5.6(+0.3) mm

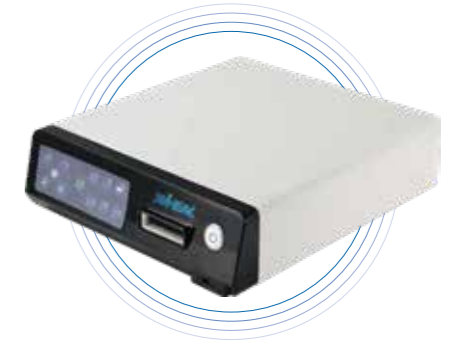
Matched Processor	Configuration Types
	XH-PVM-01 / XH-DVP-01

## Portable Endoscopy Imaging Processor



Output Resolution	1920*1280(1080P)
Digital Noise Reduction	Available
Video Output	HDMI
The Format of Image Output	JPG
The Format of Video Output	AVI
Configuration Type	XH-PVM-01

## Desktop Endoscopy Imaging Processor



Output Resolution	1920*1280(1080P)
Digital Noise Reduction	Available
Video Output	DVI
The Format of Image Output	JPG
The Format of Video Output	AVI
Configuration Type	XH-DVP-01

## FPGA Endscope Solution (With Cold Light Source)



Configuration Type	XH-LS-01
Cold Light Source	INCLUDED
NBI	Available
Pump	Optional
Display Monitor	Optional
Trolley	Optional

## Reusable Surgical Forceps Channel Tube



Material	Outer: PTFE Inner: SUS 304+PEbax
Wall Thickness of Tube	Above 0.15(±0.03) mm
Inner Diameter	Customizable
Outer Diameter	
Standard Length	760 mm
Hardness	Customizable

### Primary Advantages:

- Ultra-thin Braided Catheter(PTFE),
- Ultra-smooth.
- Combination of Hard and Soft
- Three-layers Braided Catheter.
- Smaller Bending Radius
- Excellent Supporting
- Reusable

## Insertion Tube



### Primary Advantages:

- Reusable craftsmanship is customizable.
- Excellent supporting, excellent coaxial performance and steering function.
- High inner wall smoothness.
- Flexiable customizability.

Material	Wall Thickness of Tube	Outer Diameter	Inner Diameter	Length
TPU	≥0.40 mm	9.8 mm	8.1 mm	1030 mm
		7.2 mm	5.4 mm	2130 mm
		7.2 mm	5.4 mm	1445 mm
		6.0 mm	5.0 mm	600 mm
		5.1 mm	4.1 mm	600 mm
		13 mm	10.8 mm	1426 mm
		13 mm	10.8 mm	1422 mm
		12.8 mm	10.4 mm	1680 mm
		12.8 mm	10.8 mm	1440 mm
		12.8 mm	10.8 mm	1385 mm
		12.8 mm	10.4 mm	1300 mm
		12.5 mm	10.1 mm	1240 mm
11.3 mm	9.1 mm	1240 mm		

## Multi-lumen Tube



### Primary Advantages:

- Customized for Multi-lumen is available.

Tube Types	Material	Wall Thickness of Tube	Outer Diameter	Standard Length	Hardness
Seven-lumen	PTFE/SUS 304/PEbax	NA	3.10 mm	22.20 mm	Customizable
Seven-lumen			3.70 mm		
Seven-lumen/Eight-lumen			3.10 mm		
Seven-lumen/Eight-lumen			3.70 mm		

## Guiding Sheath Catheter for Adjustable Bending Angle(GSCA)



### Primary Advantages:

- Ultra-thin inner lumen(PTFE) with low friction and high flowability.
- Imported ultra-thin steel wire braided with high compressive strength and high anti bending performance.
- Scale marked, smooth coating, connecting with catheter seat. Ultra-soft dilator, reducing injury to the patients body.
- Innovation technology.
- Covered various size, customizable.

Production Scope of GSCA	Bending Angle	Length	Inner diameter for sheath catheter (mm)
6F-18F	≥ 255°	400 mm Customizable	3.05±0.05
			3.35±0.05
			3.70±0.05
			4.05±0.05
			4.35±0.05
			4.75±0.05
			5.05±0.05